

To continue its program of quality and design improvement, the manufacturer reserves the right to change specifications, designs or prices without notice and without incurring obligation.

ILLUSTRATED Parts List

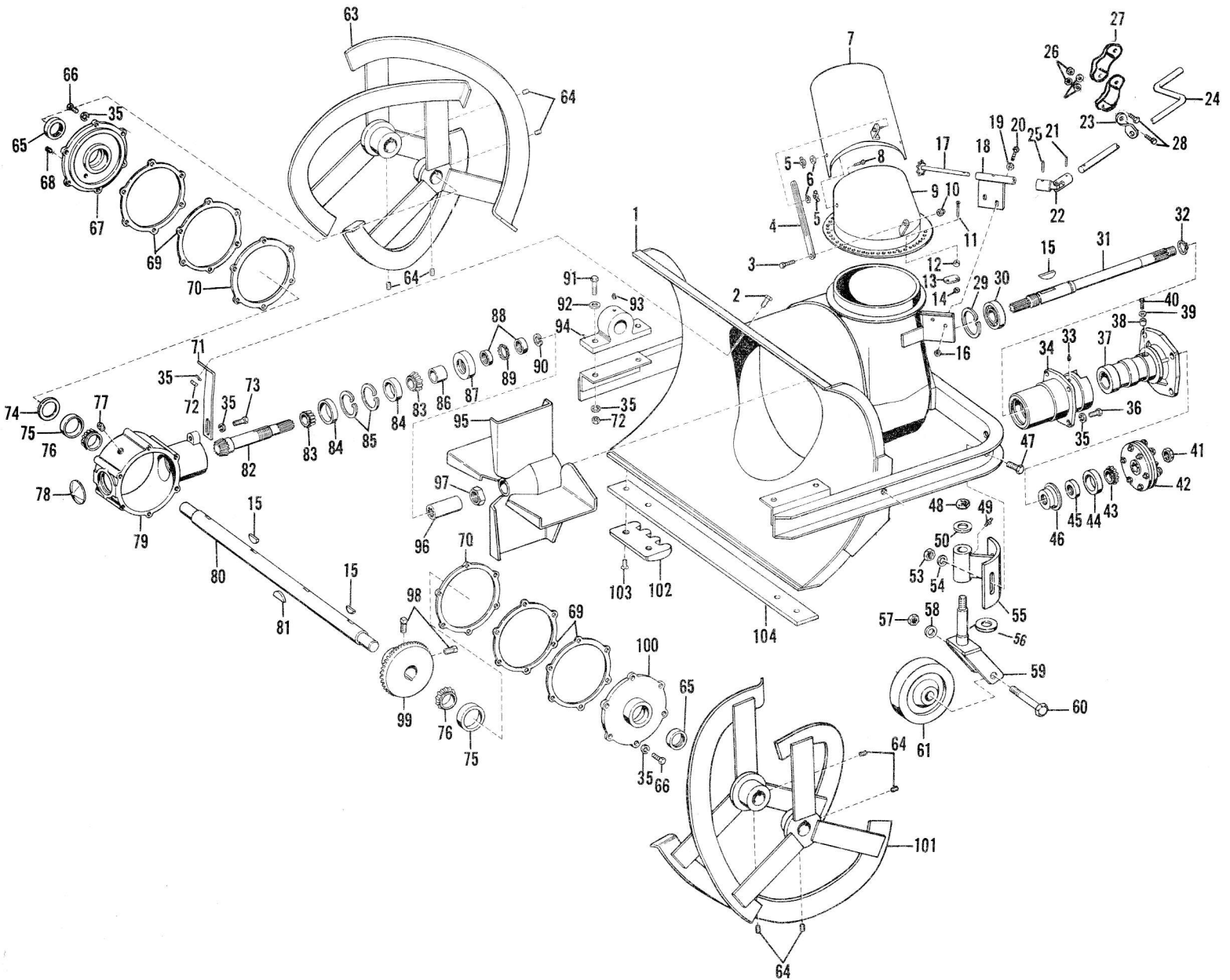
PRINTED IN U. S. A.

DELUXE SNOW BLOWER

Model Nr. MA - 115

Effective Date: July 1, 1967

Form Number: PL - 134



<u>Code</u>	<u>Part No.</u>	<u>Description</u>	<u>Code</u>	<u>Part No.</u>	<u>Description</u>
1	SB 359	Body Weldment	54	308-W	Washer
2	110-S	Screw	55	SB 369	Adj. Caster Bracket
3	183-S	Screw	56	414-W	Washer
4	6310	Deflector Adj. Brace	57	227-N	Nut
5	L 819-F	Wing Nut	58	411-W	Washer
6	401-W	Washer	59	S 105	Caster Fork
7	6305	Swivel Chute Deflector	60	S 317	Caster Axle
8	4 ST 8 C	Machine Screw	61	S 109	Caster Wheel
9	SB 376	Swivel Chute	63	SB-323/RAY	Reel Comp. Weld. Assy. R H
10	242-N	Elastic Stop Nut	64	808-A	Set Screw
11	8 SR 10 C	Screw	65	OS 108	Oil Seal
12	SB 386	Swivel Spacer	66	121-S	Screw
13	SB 385	Swivel Plate	67	SB 102-R	Bearing Hsg./Grease Plug H
14	FN 8 C	Nut	68	701-P	Pipe Plug
15	508-K	Woodruff Key	69	SB 335-S	Shim
16	242-N	Nut	70	SB 335	Gear Housing Gaskets
17	SB 380	Shaft & Pinion	71	SB 319	Brace
18	SB 383	Bearing Support	72	205-N	Nut
19	401-W	Washer	73	110-S	Brace Bolt
20	183-S	Hex Head Cap Screw	74	SB 336	Adjusting Shims
21	4 RP 6	Roll Pin	75	RB 110-R	Bearing Cup
22	SA 162	Universal Joint	76	RB 106-C	Bearing Cone
23	SB 392	Crank Bracket	77	702-P	Pipe Plug
24	SB 387	Crank	78	SB 334	Expansion Plug
25	606-C	Cotter Pin	79	SB 101	Gear Housing
26	NEO 5 C	Nut	80	SB 305	Reel Shaft
27	7408	Clamp (2Pcs)	81	509-K	Woodruff Key
28	154-S	Screw	82	SB 351	Bevel Pinion Shaft
29	RR 207	Retaining Ring	83	RB 107/C	Bearing Cone
30	BB 106	Ball Bearing	84	3147-R	Bearing Cup
31	SB 300	Fan Shaft	85	RR 206	Retaining Ring
32	RR 105	Retaining Ring	86	SB 324	Spacer
33	903-G	Grease Fitting	87	OS 109	Oil Seal
34	SB 354	Swivel Casting	88	SB 327	Bearing Locknut
35	305-W	Washer	89	SB 333	Bearing Nut Lock Washer
36	110-S	Screw	90	RR 201	Retaining Ring
37	SB 355	Drive Shaft Hsg.	91	112-S	Screw
38	SB 352	Detent	92	403-W	Washer
39	304-W	Washer	93	903-G	Grease Fitting
40	126-S	Screw	94	SB 329	Pillow Block Bearing
41	227-N	Nut	95	SB 353	Blower Fan
42	NN	Slip Clutch Assy./SC33SA	96	SB 304	Coupling
43	R 113 C	Bearing Cone	97	225-N	Esna. Hex Nut
44	RB 113 R	Bearing Cup	98	807-A	Set Screw
45	OS 112	Oil Seal	99	SB 301	Bevel Gear
46	A-474	Oil Seal Retainer	100	SB 102-L	Bearing Hsg.w/o grease plug hole
47	152-S	Screw	101	SB 323/LAY	Reel Comp. Weld. Assy/ L.H.
48	227-N	Nut	102	SB 104	Skid
49	902-G	Grease Fitting	103	139-S	Screw
50	411-W	Washer	104	SB 337	Wearing Strip (Optional)
53	211-N	Nut	NS	141-S	Screw for SB 337 (Optional)